



SmartOne C & Solar AtlasTrax™ SmartOne Programmer

Table of Contents

Introduction	1
Download & Installation	2
License Key	3
Mode of Operations	4
• Firmware Upgrade	4
• Configuration	6
Loading & Saving Configurations	8
Working OFF line	9

Introduction:

The **AtlasTrax™ SmartOne Programmer** is a TWO-in-ONE tool that allows for the following features:

- a) Uploading various versions of firmware in SmartOne C devices.
- b) Create / Modify configurations on SmartOne C and SOLAR devices.

Important note regarding Internet connection

In order to upgrade the SmartOne C firmware, the application requires an Internet connection. If you cannot access Internet, AtlasTrax can deliver a key that allows to work offline. Please contact us at support@atlastrax.com

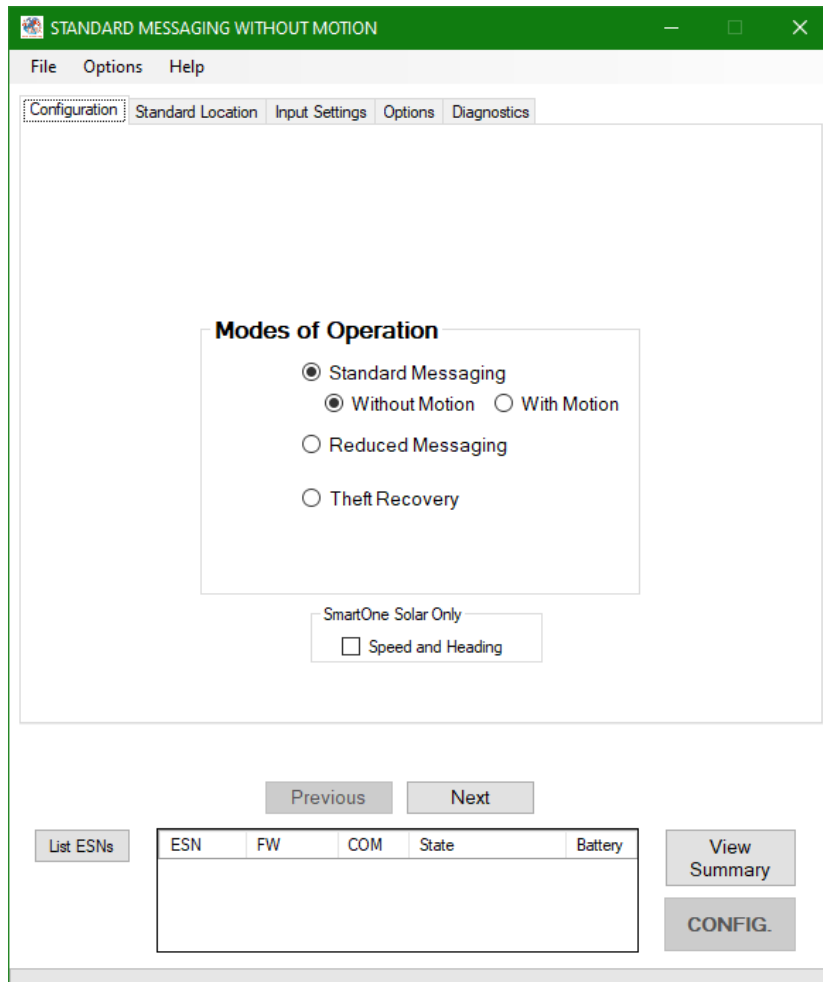
Download & Installation:

1) Down the most recent version of the **AtlasTrax™ SmartOne Programmer** available here:

http://fw-loader.atlstrax.com/files/SmartOne_C_MultiUploader.pdf

2) Execute the installer.

3) Run the application.

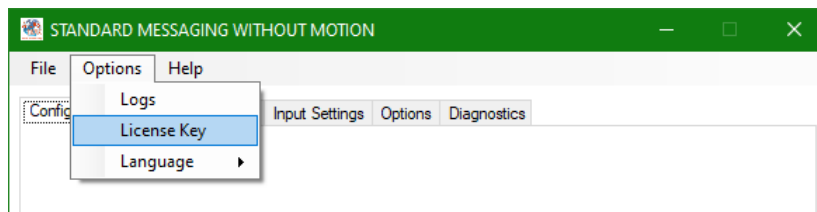


Note: The AtlasTrax™ SmartOne Programmer works only on Windows Systems.

License key

For using the Firmware uploader function of the **AtlasTrax™ SmartOne Programmer**, you will need a personal key. Without this key the **AtlasTrax™ SmartOne Programmer** can work just as the original Globalstar Configurator. kailto

Select Options -> License Key and enter the License Key that has been sent to you. If you did not receive a license key, please request your key to support@atlastrax.com



Once the License Key is installed, the programmer will close and reopen shortly with all functions available.



Note: It is important to understand that every configuration is not compatible with every firmware version. Some firmware imposes boundaries that the configurator cannot breach. For instance, the original Firmware Version 1.7 limits the Interval Messaging and Message Interval Inside COL to 35 minutes. Without special firmware, it would not be possible to configure higher transmission rates.

Mode of Operations:

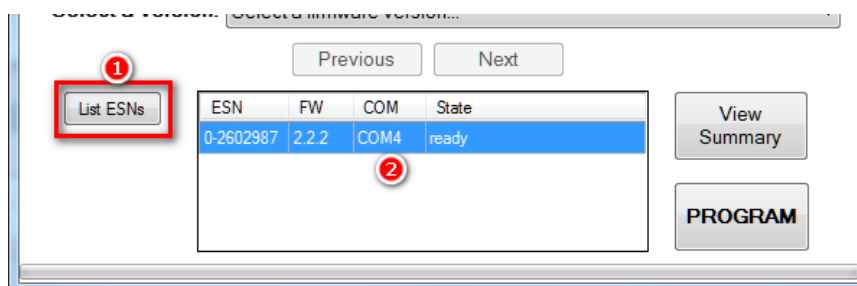
Depending on specific requirements, it may be necessary to update or modify device firmware; if the firmware is already up to date, changing the device configuration will suffice. These two distinct operations are detailed below:

Firmware Upgrade

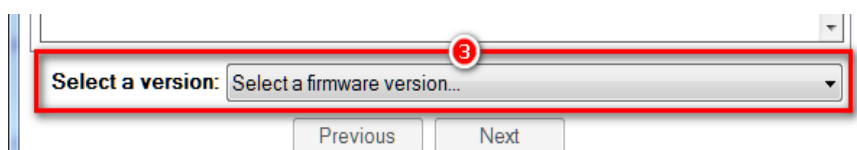
For one or more device(s):

❶ *Connect* one or more SmartOne C devices to your computer's USB port(s), then click on the **List ESN** button, and let the **AtlasTrax™ SmartOne Programmer** identify all the connected devices.

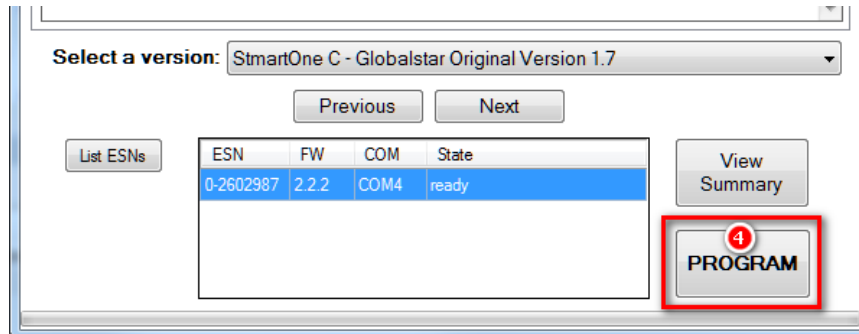
❷ Verify that all the connected devices have been identified. If not, click the List ESN button again.



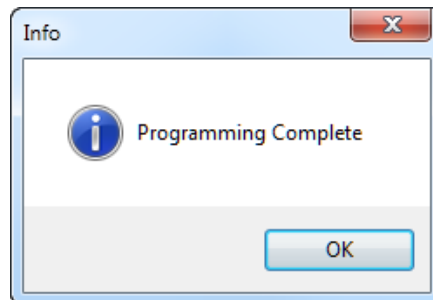
❸ Select the desired firmware version from the dropdown **Version Selector**:



4 Click the **PROGRAM** button to start programming the device.



5 Wait until the **Programming Complete** dialog pops up:



At this point, all connected devices have been loaded with the selected firmware.

Important note: When new firmware has been loaded, the previous configuration is deleted. You must then **reconfigure the device(s)** as explained in the next section.

Configuration

For one or more device(s):

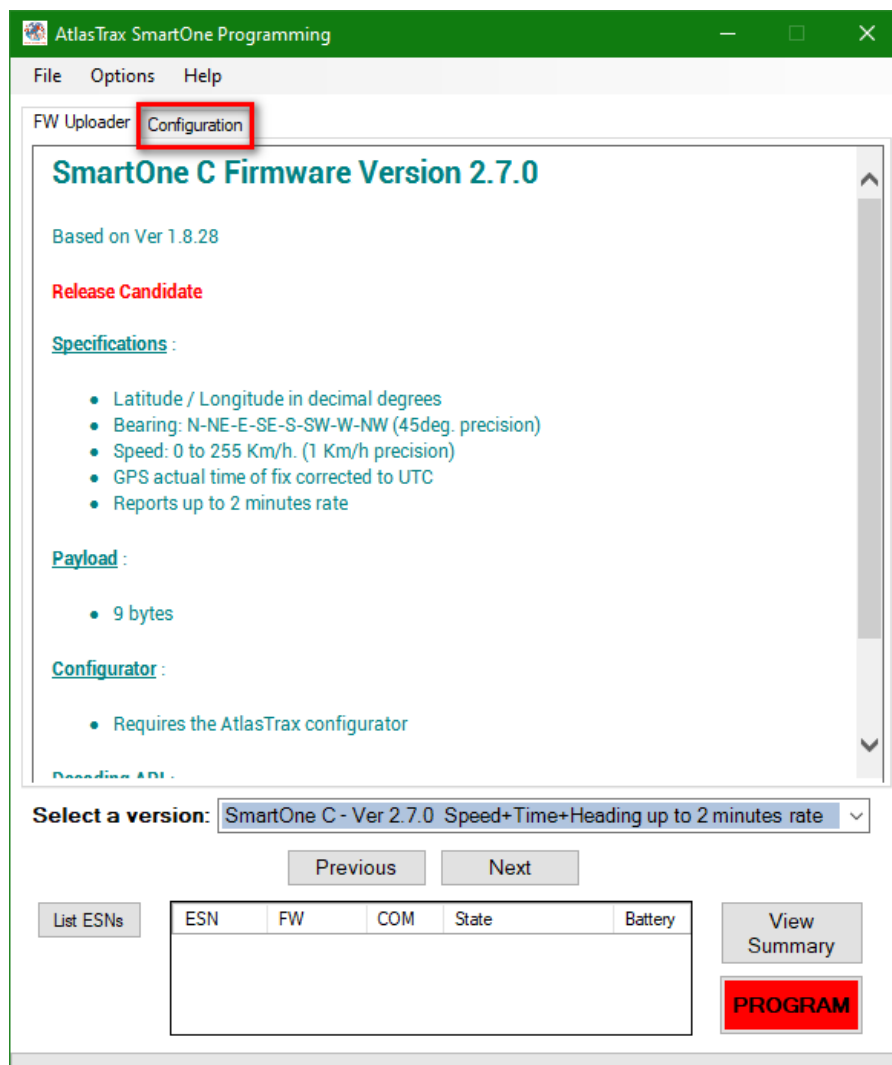
Complete steps ①,②,③ and ④ above. If you just uploaded new firmware and your device(s) are still connected, you can skip these 3 preliminary steps.

Important:

Keep the same firmware selection for both, firmware uploading and device configuration

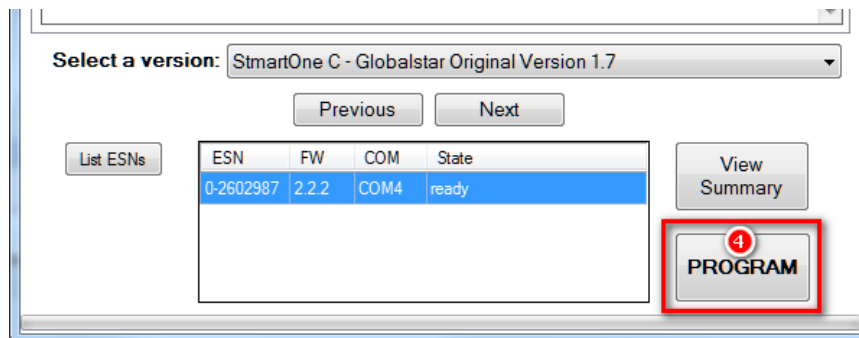
Upon selecting new firmware, a new tab **Configuration** appears at the top of the **AtlasTrax™ SmartOne Programmer**.

Click this tab to open all the configurator tabs and selectors.

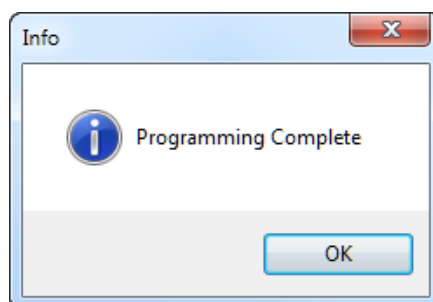


If you are not already familiar with the SmartOne C configuration, please refer to the [SmartOne C User Manual](#) for detailed instructions on how to configure your device(s).

Once the configuration is ready, click the **PROGRAM** button to upload the new configuration to the device(s).



The **Programming Complete** message indicates that the operation was successful.



Loading & Saving Configurations

Once you have successfully defined and tested a configuration, you can save it on your computer for future use with the **AtlasTrax™ SmartOne Programmer** menu.

Load Configuration from file (Ctrl O)

Save Configuration to file (Ctrl S)

You can also re-read a configuration from a device with the following commands:

Read configuration from SMARTONE (Ctrl R)

Write configuration to SMARTONE (Ctrl W)

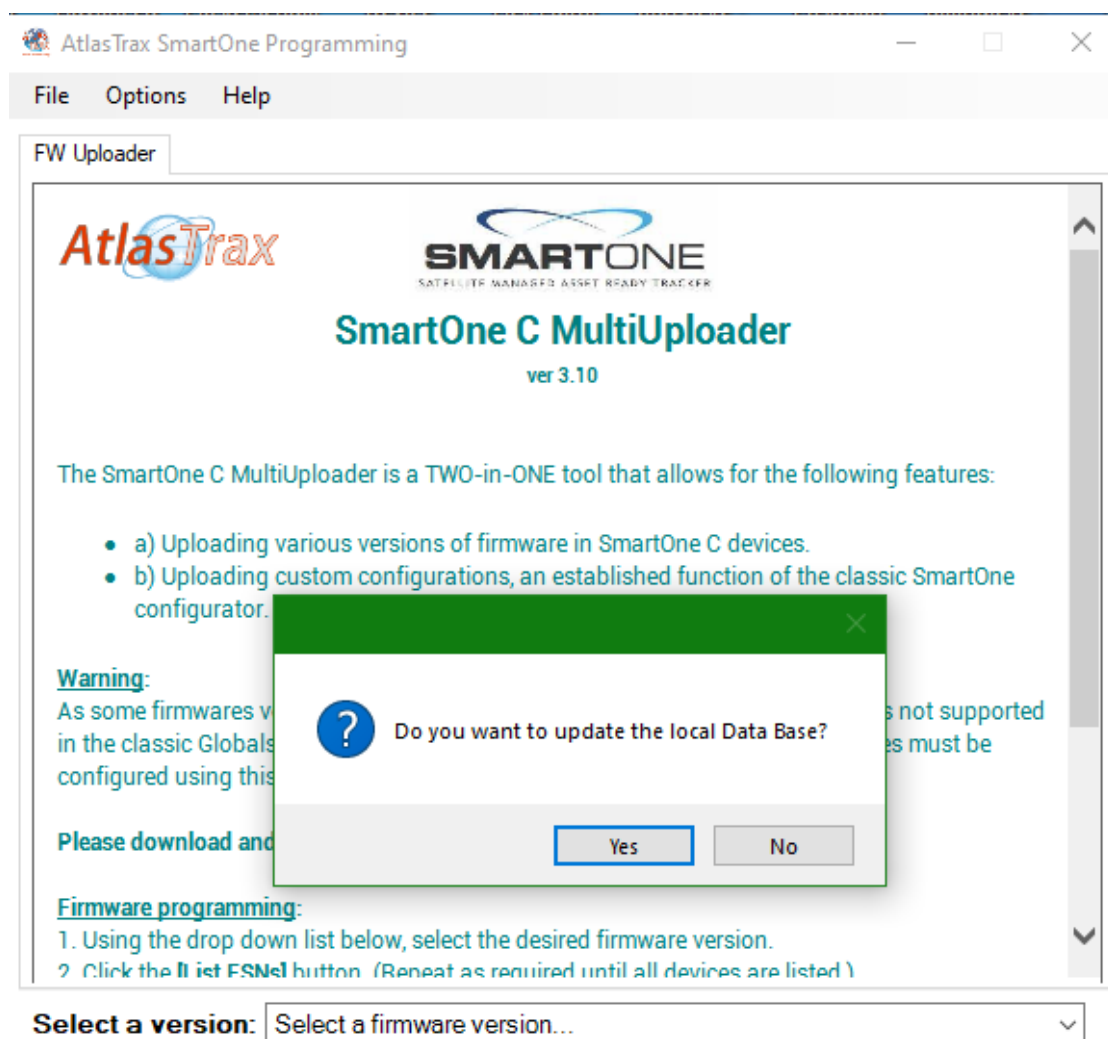
Important note: Configurations defined and saved by the original Globalstar configurator will only work with the original firmware 1.5 to 1.7. Any other firmware version requires a new configuration.

Working offline

In some environments such as forestry, high-seqs, desertic areas, a connection to Internet is not always available.

AtlasTrax can deliver special keys (offline keys) that allow to download a subset of firmware to your computer for further use.

When an offline key is installed, the **AtlasTrax™ SmartOne Programmer** will ask if you want to install the firmware onto your local computer



Click the **Yes** button for installing the firmware onto your computer.

Once this has been installed, the AtlasTrax™ SmartOne Programmer will use your local database instead of the Internet connection.